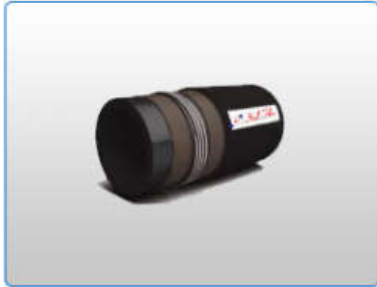


Water Discharge Hose



Application

Light weight rubber hose design for water, natural liquid fertilizer, waste water, etc., for submerged pump and irrigation systems.

Construction

Core: Synthetic rubber blended Reinforcement: Piles of synthetic cord Cover: Synthetic rubber blended
Temperature Range: Continuous: -20°C to +85°C.

Italflex Part No	Hose I.D. (Nom.)		Hose O.D. (Nom.)	Working Pressure		Min. Burst Pressure	
	Inch	mm		psi	bar	psi	bar
IF610-16	1	25	32	300	20	870	60
IF610-20	1.1/4	32	39	300	20	870	60
IF610-24	1.1/2	38	45	300	20	870	60
IF610-32	2	51	58	300	20	870	60
IF610-40	2.1/2	63	70	300	20	870	60
IF610-48	3	76	83	300	20	870	60
IF610-64	4	102	109	300	20	870	60
IF610-80	5	127	137	300	20	870	60
IF610-96	6	152	162	300	20	870	60
IF610-128	8	203	217	300	20	870	60

For more details or product related enquires feel free mail us: info@italflexitaly.it